

POP-UP TROLL

CUTTING LIST

- Beam - softwood 1 x 1 x 20
- Pivot - softwood 1 x 1 x 5
- Slot - 2 pieces softwood 1 x 1 x 2
- Base - thick card rectangle 5(7) x 25
- Body - stiff card 4 x 5 and 8 x 5
 + thread + coloured card scraps

The base card is a piece of stiff corrugated card, cut so the corrugations run lengthwise. The sides are folded up to stiffen the base. Make sure there is still 5cm between the sides.

If you use a very thick card you should be able to get away without folding up sides, but of course it will be more difficult to cut.

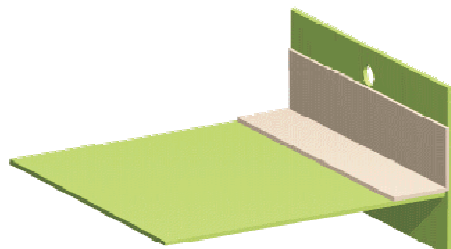
First make up the beam
 The pivot should be glued across the main beam somewhere between 4 and 5cm from one end.

The two small blocks can be glued at the other end with a gap left between them that is just wide enough to take the thickness of the troll card.

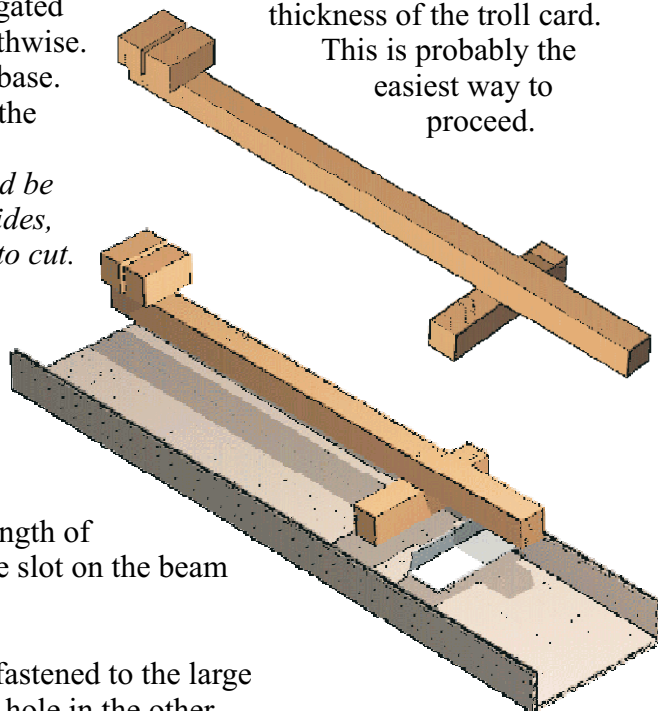
This is probably the easiest way to proceed.

The beam is joined to the base using a folded card or paper hinge. Make sure that it is glued the right way round. The beam should rock like an out-of-balance seesaw.

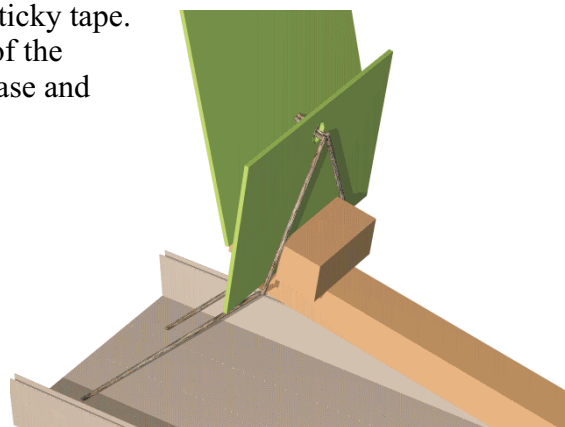
Join the 2 card rectangles with another paper hinge. A length of masking tape will do fine. Glue the smaller piece into the slot on the beam - with the larger piece nearer the beam end



The operating threads are fastened to the large card exactly level with the hole in the other card. It probably best to poke a hole right through, push through a doubled length of thread and secure at the back with sticky tape. The 2 threads are taken either side of the beam, as shown. Cut 2 slits in the base and pull the threads into these slits.



To make the troll jump up you press on the other end of the beam. To make it work properly the threads need to be just the right length. Adjust by pulling them through the slits. Try the action each time you make an adjustment. When you are satisfied secure the ends of the thread under the base card with more sticky tape.



Now comes the fun bit!

Cut out shapes to form the arms and the hands. It is much easier to cut these out as separate parts which can be glued together. The same goes for the head and the neck, even ears are better stuck on the back of the head. Do not overload the troll with too many heavy parts. That will make the toy more difficult to operate and put a greater bending strain on the base.

If you find the base still bends because the side walls tend to flatten out either reinforce the base with lengths of wood or glue a linking bracket from 'wall-to-wall', above the pivot.

